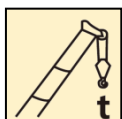


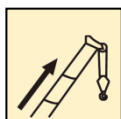
XCT70_S 汽车面起重机 / Truck Crane

技术规格书

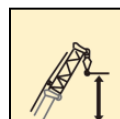
Technical specifications



70t



44.5m



60.3m



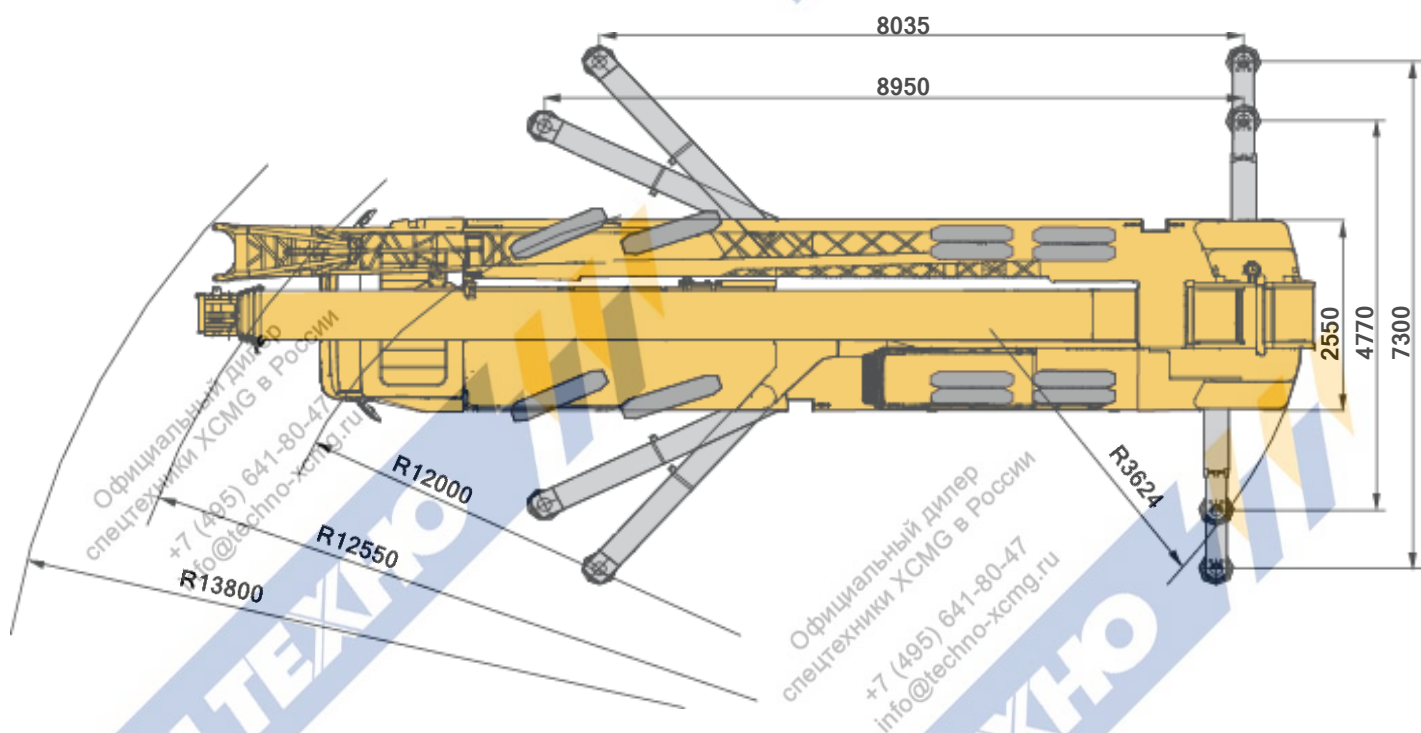
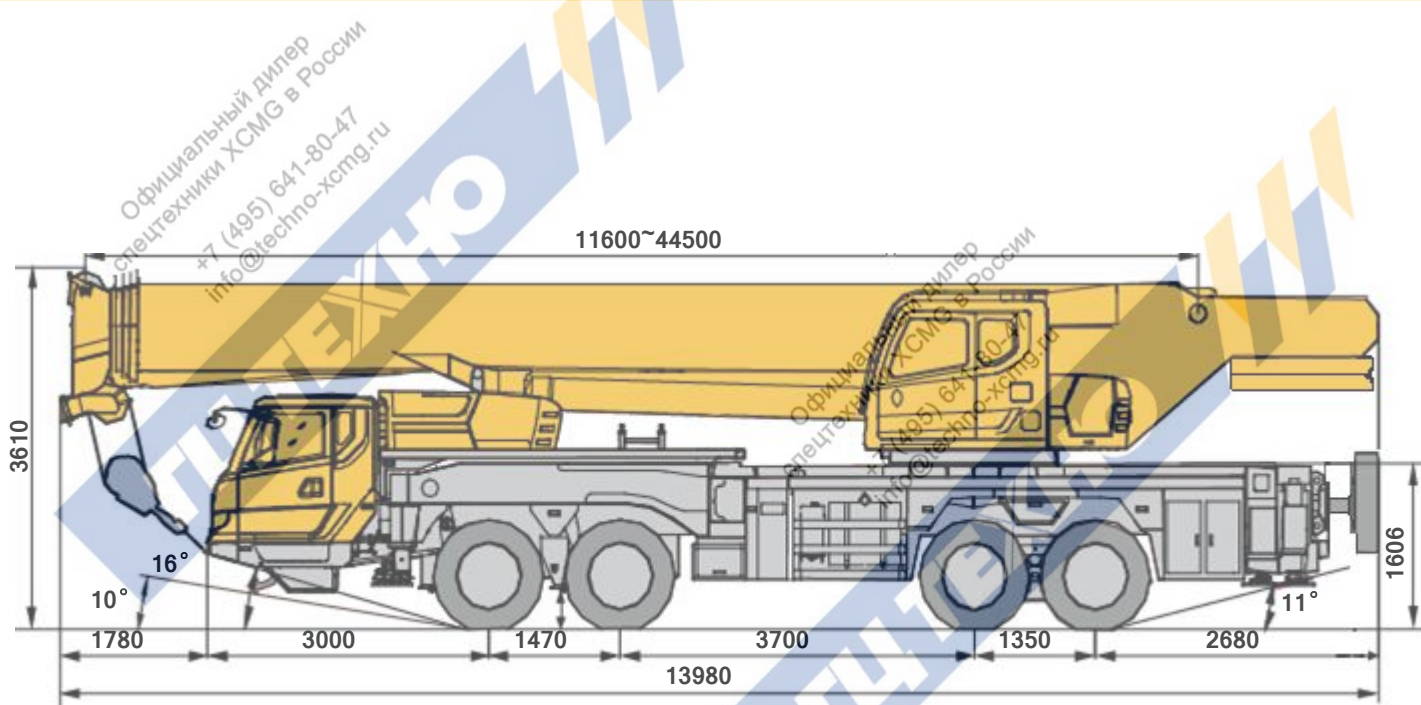
目录
Content

目录
Content

尺寸参数 Dimensions	3
技术规格 Product Specifications	4-7
重量/作业速度 Weight / Working speeds	8
平衡重 Counterweight	9
臂架组合方案 Boom / Jib combinations	10
主臂 Boom	11-14
副臂 Jib	15-16
符号标识 Description of symbols	17
注意事项 Notes	18

尺寸参数

Dimensions



技术规格 Technical specifications

	Chassis
Frame	Designed and manufactured by XCMG, with all covered walking surface, anti-torsion box structure and optimal load-bearing structure design, made of high strength steel.
Outrigger	4 outriggers, K-shaped arrangement, rear lateral outrigger are two stage , lateral and vertical outrigger controlled by the hydraulic control. Both sides of the chassis equipped with outrigger operating system, lighting and speed buttons; outrigger cylinders equipped with one-way valve, and the vertical outrigger has two-way hydraulic lock. Scale of outrigger float:Φ450 Most force on outrigger:580KN.
Engine	MC11.36-50, in-line six-cylinder water-cooled EFI diesel engine, manufactured by CNHTC, rated power 268kW /1900rpm, max torque 1800Nm / 1000-1400rpm, Euro V emission standards. Fuel tank capacity : 300L
Gearbox	Mechanical transmission manufactured by Fast, with 10 forw-ard gears and 2 reverse gears available
Alxes	High strength axle with reliable performance, manufactured by xuzhou Meritor,1&2 alxes sreering,3&4 alxes driving.
Suspension	Front suspension is steel spring,rear suspension is rubber spring.
Tires	12 tires and 1 spare tire, 1&2 axles are equipped with single tire,3&4 axles are equipped with double tire. Tire specifications:315/80R22.5
Brakes	Service brake: double-circuit air pressure brake, acting on all wheels. Parking brake: spring energy brake, acting on wheels of 3&4 axles. Auxiliary brake: engine retarded brake,
Steer	1&2 alxes sreering, mechanical steer with hydraulic assist
Cab	Luxurious cab, two passengers are allowable. Equipped with GLONASS device、 electronic control glass,seat can be adjusted, electronic control mirror and radio, 2 kilograms fire extinguisher. Cold-warm air-condition is equipped.
Electric	24V(DC),2 battery in series. Generator:24V,80A

	Superstructure
Frame	Designed and manufactured by XCMG; made of high-strength steel
Hydraulic system	The variable plunger pump driven by engine is used to control hoisting, elevating and telescoping; and the gear pump is used for slewing operations. Load sensitive proportional multi-way change valve, Air-cooled hydraulic oil radiator; Volume of hydraulic oil tank: 1000L
Operating mode	Hydraulic pilot control of all crane movements using two control levers. All crane movements are controlled by hydraulic pump and proportional valve.
Main winch system	Hydraulic controlled speed regulation, groove drum is equipped, driven by hydraulic motor through planetary gear reducer, and built-in normally closed brake and counterbalance valve are available.
Auxiliary winch system	Hydraulic controlled speed regulation, groove drum is equipped, driven by hydraulic motor through planetary gear reducer, and built-in normally closed brake and counterbalance valve are available.
Slewing system	Single-row four-point contact ball type with external slewing ring, planetary gear slewing reducer is driven by hydraulic motor which can slew 360° continuously. It has functions of power control or free slewing and stepless speed regulation is available.
Elevating System	A single-cylinder with balance valve equipped is used for front support elevation.
Operator's cab	New fully-enclosed steel tiltable cab with a full-view front window. Safety glass and sun shield are used for windows. Wipers are fitted for the windshield and roof window. The cab features a new ergonomic seat design with backrest adjustment and armrests with joysticks fitted. A sliding door and a pull-out step are available. Air conditioner are available. Fire extinguisher 2kg
Safety devices	Hydraulic balance valve; Hydraulic relief valve; Double-way hydraulic valve; LMI; spring aligning device for joystick; Lowering limiter for preventing wire rope from over-releasing; Anti-two block at boom head for preventing wire rope from over-winding; tri-color warning lamp.
Combined counterweight	Total weight is 6.5 t. Counterweight configurations: 5.2 t, 6.5 t

技术规格 Technical specifications



Boom system

Boom	<p>5-section, U-shape cross section, welding structure. Double-cylinder plus ropes telescoping system is designed to extend/retract the boom.</p> <p>Boom length: 11.6m ~ 44.5m.</p>
Boom Single top	<p>Boom single top is installed on the top of boom and used for lifting operation of single line wire rope.</p> <p>The lifting performance of boom single top is the same with boom, but max. load capacity cannot exceed 5000kg.</p>
Jib	<p>It is stowed beside the boom, consisted of a connecting bracket, a rotating bracket and two lattice bi-fold jibs with jib offset angle: 0° ,15° ,30</p> <p>Jib length 9.2m/16m.</p>

Additional equipment

Safety devices	<p>Anemometer, level gauge , backup camera , caution lamp, Functions for EAC certificate, including virtual wall, low temperature warning and high voltage warning functions .</p>
Counterweight	<p>The optional weight is 3 t.</p>

Product parts details As mentioned above, please refer to the product quotation for specific parts.

重量
Weight



车桥 Axle	1	2	3	4	总重量 Total weight
t	9	9	13	13	44



吊钩 Hook	倍率 No. of lines	吊钩重量 Weight kg	吊钩尺寸 Dimensions mm	备注 Remarks
70t	13	550	504×562×1480	单钩 Double hook , 标配 Standard
35t	8	360	430×504×1362	单钩 Single hook , 选配 Optional
5t	1	100	300×300×535	单钩 Single hook , 标配 Standard

作业速度
Working speeds

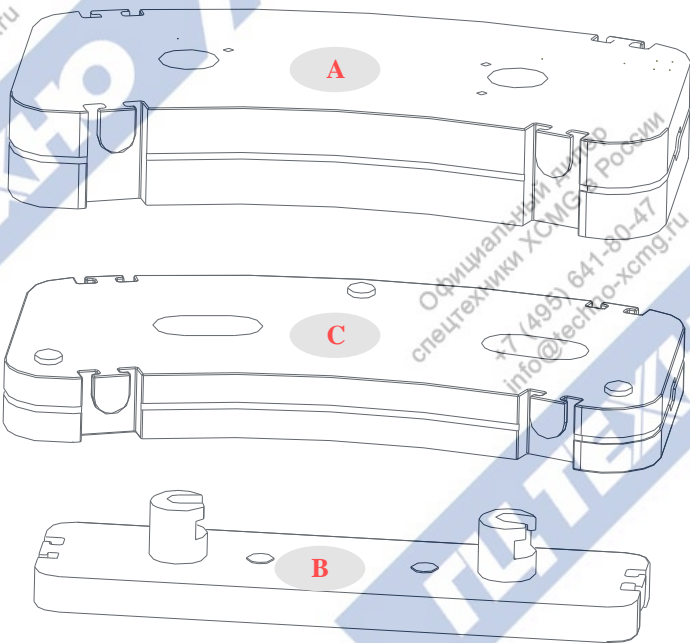


315/80 R 22.5	2.5 ~ 80		45%



作业机构 Drive	作业速度 Working speed	最大单绳拉力 Max. single line pull	钢丝绳直径/长度 Rope diameter/ length
	0-130 m/min , 单绳 , 第四层 m/min, single line, 4th layer	52kN	18mm/208m
	0-130 m/min , 单绳 , 第四层 m/min, single line, 4th layer	52 kN	18mm/140m
	0-2 r/min		
	从-1°抬起至80°约40s Approx. 40s for boom elevation from -1° to 80°		
	从11.6m伸出至44.5m约80s Approx. 80s for boom extension from 11.6m to 44.5m		

平衡重
Counterweight



平衡重 Counterweight	A	B	C
尺寸 (长×宽×高) m Size (L×W×H) m	372×1282×2400	355×600×2200	278×1282×2400
重量 t Weight t	5.2	1.3	3
工况模式 Working mode	9.5t		6.5t
组合形式 Combinations	A+B+C		A+B

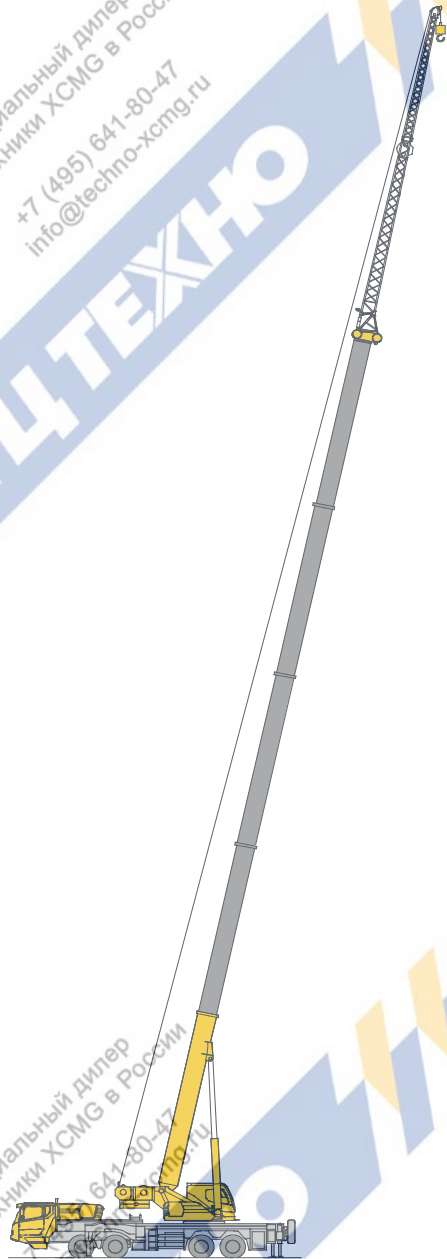
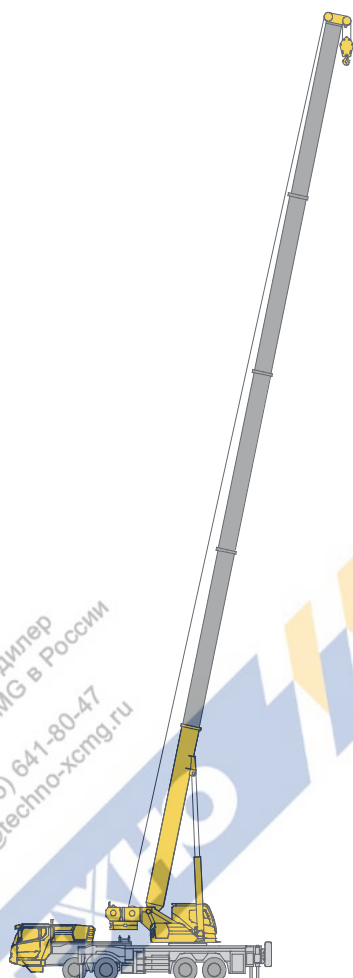
臂架组合方案
Boom / Jib combinations

Официальный дилер
спецтехники XCMG в России
+7 (495) 641-80-47
info@techno-xcmg.ru

Официальный дилер
спецтехники XCMG в России
+7 (495) 641-80-47
info@techno-xcmg.ru

Официальный дилер
спецтехники XCMG в России
+7 (495) 641-80-47
info@techno-xcmg.ru

Официальный дилер
спецтехники XCMG в России
+7 (495) 641-80-47
info@techno-xcmg.ru



主臂
Telescopic boom

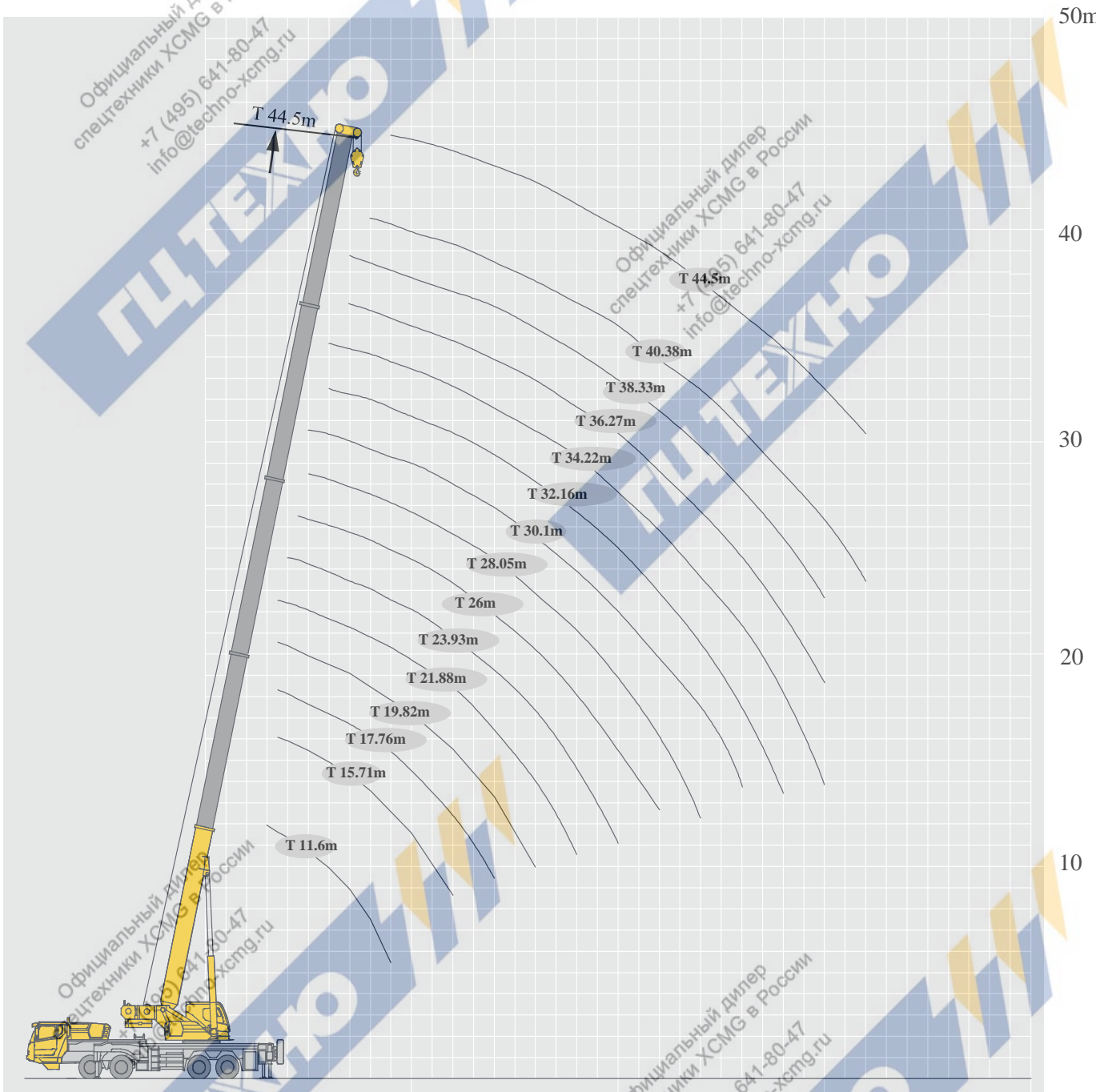
T : 11.6~44.5m

副臂
Jib

T : 44.5m
J : 9.2/16 m

起升高度曲线图
Lifting heights

主臂
Boom



起重性能表
Lifting capacities

T 11.6~44.5m








	11.6m	15.71m	19.82m	26m	32.16m	38.33m	44.5m	17.76m	23.93m	30.1m	36.27m	21.88m	28.05 m	34.22	40.38m	
2	70															
3	60															3
3.5	51.5	45	35					27				27				3.5
4	48	45	35					27	24			27				4
4.5	45	43	33.5	27				27	24			27				4.5
5	41.5	41	32	27				27	24	18.6		27	24			5
6	33.8	33.8	29	24.5	19.3			27	22	17.3		27	22	15.9		6
7	27.6	27.6	25.9	22.2	19.3	14.3		26	20.6	15.8	11.5	26	20.8	15.9		7
8	22.8	22.3	22	20	18.3	14.3		23.5	19.1	14.6	11.5	23.5	19.3	14.9	10.1	8
9	18.1	17.7	17.4	18	17	13.6	9.8	19.7	17.3	13.5	11	19.1	17.5	13.9	10.1	9
10		14.4	14.1	15.3	15.8	12.8	9.8	16.4	15.5	12.3	10.3	15.8	16	12.9	9.9	10
12		10	9.7	10.8	11.5	11.5	9.1	11.9	12.5	10.7	9.1	11.3	12	11.4	8.8	12
14			6.8	7.9	8.5	8.9	8.3	8.8	9.5	9.4	8	8.3	9	9.4	7.9	14
16			5	6.1	6.5	6.9	7.2		7.5	7.7	7	6.3	6.9	7.3	7.1	16
18				4.6	5.1	5.4	5.7		6	6.2	6.2	4.8	5.4	5.8	6.1	18
20				3.5	3.9	4.3	4.6		5	5.1	5.3		4.3	4.6	4.9	20
22				2.55	3.1	3.45	3.7			4.2	4.4		3.4	3.8	4	22
24					2.45	2.7	3			3.5	3.7		2.7	3.1	3.3	24
26					1.8	2.2	2.4			2.9	3.1			2.5	2.7	26
28					1.3	1.7	1.9				2.6			2	2.2	28
30						1.3	1.5				2.2			1.6	1.8	30
32							1.2								1.4	32

Официальный дилер
спецтехники XCMG в России
+7 (495) 641-80-47
info@techno-xcmg.ru

Официальный дилер
спецтехники XCMG в России
+7 (495) 641-80-47
info@techno-xcmg.ru

起重性能表
Lifting capacities

T 11.6~44.5m

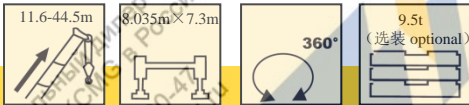
																
	11.6m	15.71m	19.82m	26m	32.16m	38.33m	44.5m	17.76m	23.93m	30.1m	36.27m	21.88m	28.05 m	34.22m	40.38m	
2	70															
3	60															3
3.5	51.5	45	35					27				27				3.5
4	48	45	35					27	24			27				4
4.5	45	43	33.5	27				27	24			27				4.5
5	41.5	41	32	27				27	24	18.6		27	24			5
6	33.8	33.8	29	24.5	19.3			27	22	17.3		27	22	15.9		6
7	27.6	27.6	25.9	22.2	19.3	14.3		27	20.6	15.8	11.5	26	20.8	15.9		7
8	23.9	23.5	23.3	20	18.3	14.3		25	19.1	14.6	11.5	23.5	19.3	14.9	10.1	8
9	19	18.8	18.5	18	17	13.6	9.8	20.8	17.3	13.5	11	20.1	17.5	13.9	10.1	9
10		15.3	15.1	16.2	15.8	12.8	9.8	17.2	15.5	12.3	10.3	16.6	16	12.9	9.9	10
12		10.8	10.5	11.6	12.2	11.5	9.1	12.5	13.2	10.7	9.1	12	12.6	11.4	8.8	12
14			7.5	8.6	9.2	9.6	8.3	9.5	10.1	9.4	8	8.9	9.6	10	7.9	14
16			5.4	6.5	7	7.5	7.6		7.9	8.3	7	6.8	7.4	7.8	7.1	16
18				5	5.5	5.9	6.2		6.4	6.7	6.2	5.3	5.9	6.3	6.4	18
20				3.8	4.4	4.7	5		5.2	5.5	5.6		4.7	5.1	5.3	20
22				2.8	3.4	3.8	4.1			4.5	4.8		3.8	4.1	4.4	22
24					2.7	3.1	3.4			3.8	4		3	3.4	3.6	24
26					2.1	2.5	2.8			3.2	3.4			2.8	3	26
28					1.6	2	2.2				2.9			2.2	2.5	28
30						1.5	1.8				2.4			1.8	2	30
32							1.4								1.7	32

Официальный дилер
спецтехники XCMG в России
+7 (495) 641-80-47
info@techno-xcmg.ru

Официальный дилер
спецтехники XCMG в России
+7 (495) 641-80-47
info@techno-xcmg.ru

起重性能表
Lifting capacities

T 11.6~44.5m



	11.6m	15.71m	19.82m	26m	32.16m	38.33m	44.5m	17.76m	23.93m	30.1m	36.27m	21.88m	28.05 m	34.22m	40.38m	
2	70															
3	60															3
3.5	51.5	45	35					27				27				3.5
4	48	45	35					27	24			27				4
4.5	45	43	33.5	27				27	24			27				4.5
5	41.5	41	32	27				27	24	18.6		27	24			5
6	33.8	33.8	29	24.5	19.3			27	22	17.3		27	22	15.9		6
7	27.6	27.6	27.6	22.8	19.3	14.3		26	20.6	15.8	11.5	26	20.8	15.9		7
8	26.3	25.9	25.5	20.9	18.3	14.3		25	19.1	14.6	11.5	25	19.3	14.9	10.1	8
9	21.3	20.8	20.4	19	17	13.6	9.8	22.9	17.3	13.5	11	22.2	17.5	13.9	10.1	9
10		17.2	16.8	17.9	15.8	12.8	9.8	19	15.5	12.3	10.3	18.5	16	12.9	9.9	10
12		12.2	11.9	12.9	13.5	11.5	9.1	13.9	14.6	10.7	9.1	13.4	14.1	11.4	8.8	12
14			8.8	9.8	10.3	10.6	8.3	10.7	11.3	9.4	8	10.2	10.8	10	7.9	14
16			6.6	7.6	8.1	8.5	7.6		9	8.3	7	8	8.6	8.9	7.1	16
18				5.9	6.5	6.8	7		7.4	7.5	6.2	6.3	6.9	7.3	6.4	18
20				4.6	5.2	5.5	5.8		6	6.4	5.6		5.6	5.9	5.7	20
22				3.6	4.2	4.5	4.8			5.3	5.2		4.6	4.9	5.2	22
24					3.4	3.8	4			4.5	4.6		3.7	4.1	4.3	24
26					2.7	3.1	3.3			3.8	4			3.4	3.7	26
28					2.2	2.5	2.8				3.4			2.9	3.1	28
30						2.1	2.3				3			2.4	2.6	30
32							1.9								2.2	32

Официальный дилер
спецтехники XCMG в России
+7 (495) 641-80-47
info@techno-xcmg.ru

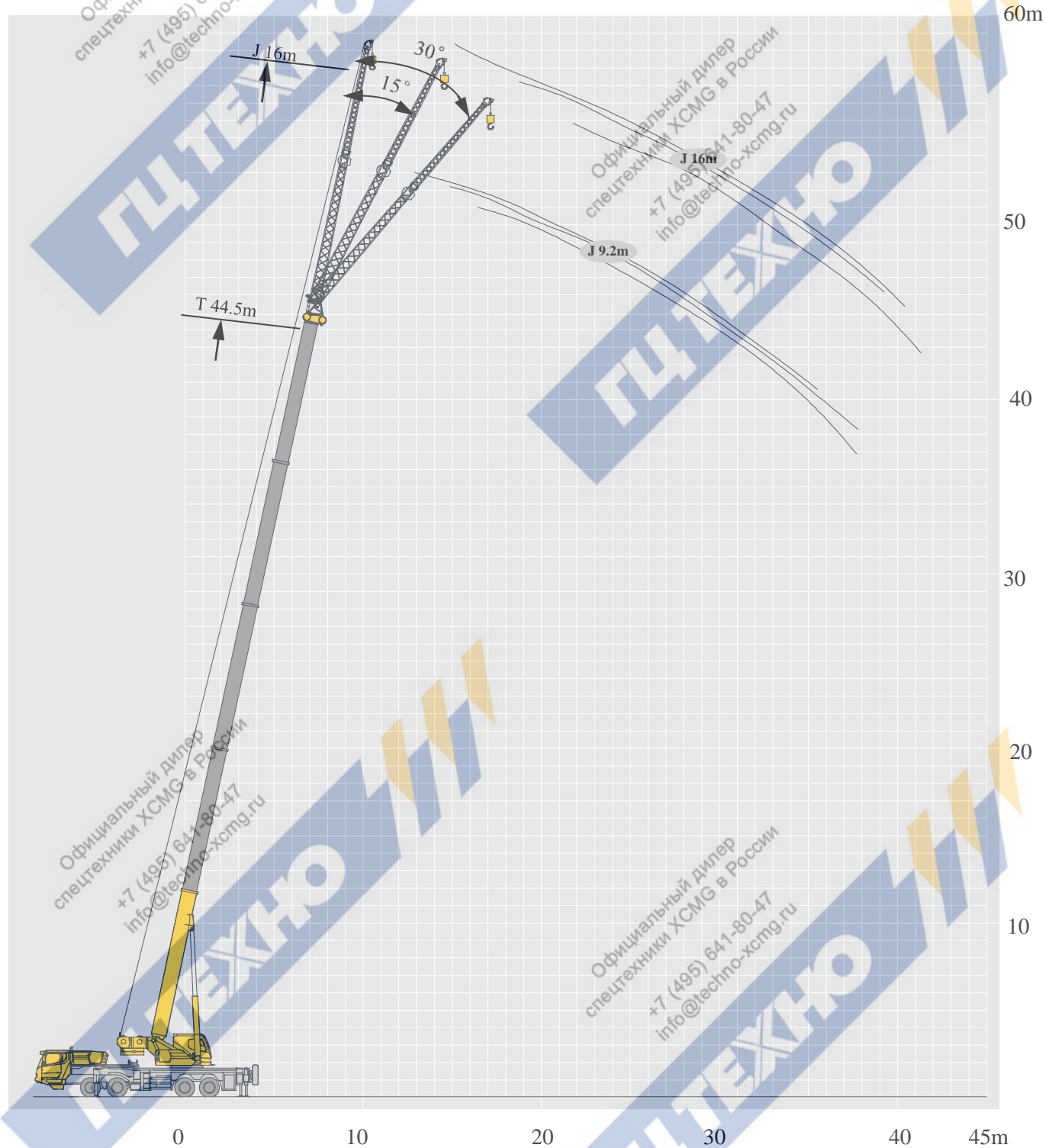
Официальный дилер
спецтехники XCMG в России
+7 (495) 641-80-47
info@techno-xcmg.ru

起升高度曲线图

Lifting heights


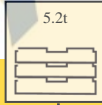





副臂


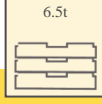

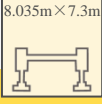



Jib


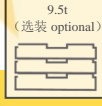
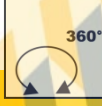
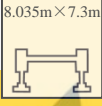





起重性能表
Lifting capacities

T 44.5m

<div><div></div><div></div><div></div></div>							
9.2m				16m			
	0°	15°	30°	0°	15°	30°	
78	5	3.3	2.5	3	2	1.4	78
75	4.7	3.1	2.4	2.8	1.8	1.3	75
72	4.5	3	2.3	2.6	1.6	1.2	72
70	3.9	2.7	2.2	2.5	1.5	1.2	70
65	3	2.5	1.9	2.2	1.3	1.1	65
60	1.9	1.7	1.6	1.6	1.2	1	60
55	1.1	1	1	0.9	0.8	0.8	55
50	0.6	0.5	0.5	0.5			50

<div><div></div><div></div><div></div></div>							
9.2m				16m			
	0°	15°	30°	0°	15°	30°	
78	5	3.3	2.5	3	2	1.4	78
75	4.7	3.1	2.4	2.8	1.8	1.3	75
72	4.5	3	2.3	2.6	1.6	1.2	72
70	3.9	2.7	2.2	2.5	1.5	1.2	70
65	3.3	2.5	1.9	2.2	1.3	1.1	65
60	2.1	2	1.8	1.8	1.2	1	60
55	1.3	1.2	1.2	1.1	1.0	0.8	55
50	0.8	0.7	0.7	0.6	0.6	0.5	50




















<div><div></div><div></div><div></div></div>							
9.2m				16m			
	0°	15°	30°	0°	15°	30°	
78	5	3.3	2.5	3	2	1.4	78
75	4.7	3.1	2.4	2.8	1.8	1.3	75
72	4.5	3	2.3	2.6	1.6	1.2	72
70	3.9	2.7	2.2	2.5	1.5	1.2	70
65	3.7	2.5	1.95	2.2	1.3	1.1	65
60	2.7	2.1	1.8	2	1.2	1	60
55	1.8	1.6	1.6	1.6	1.1	0.8	55
50	1.2	1.1	1.1	1	0.9	0.6	50

符号标识

Description of symbols

常规标识

General symbols

	上车 Superstructure		底盘 Chassis
	起重能力 lifting capacity		车桥 Axle
	吊臂长度 Boom length		行驶速度 Driving speed
	工作幅度 Radius		爬坡能力 Gradability
	吊臂仰角 Boom position		轮胎 Tires
	主臂起升高度 Hoist height with Boom		支腿 Outriggers
	固定副臂长度 Fixed jib length		吊钩 Hook block
	副臂安装角 Jib offset angle		平衡重 Counterweight
	副臂起升高度 Hoist height with jib		卷扬 Winch
	360°全回转 360° rotation		

注意事项

Notes

1. 表中额定总起重量值，是在平整的坚固地面上本起重机能够保证的最大总起重量，包括吊钩和吊具的重量，所以为了估算重物重量，必须减去上述的装置重量。
2. 表中的工作幅度为起吊重物离地时起重物到起重机回转轴线的水平距离，是包括起重臂变形量在内的实际值，因而起吊前应考虑起重臂变形量。
3. 只允许在5级(瞬时风速14.1m/s，风压125N/m²)风以下进行作业。
4. 吊重前操作者必须对物体的重量和工作范围了解后选择合适的作业工况，严禁超出表中的数值。幅度及臂长在相邻两个数值之间时，应依据两个数值中较小值确定起重作业。
5. 应按主臂仰角范围作业，即使是空载，也不应使主臂仰角处于范围外，谨防整机倾翻。
6. 表中的主臂长度应要按照每节臂的伸缩要求进行伸出。

1. The total rated loads given in the rated load charts are the maximum lifting capacity when the crane is set up on firm and level ground, which includes the weight of the hook block and slings. The weight of above-mentioned devices should be deducted to correctly calculate the load weight.
2. The working radius shown in the rated load charts is the radius when the load is lifted off the ground, and it is the actual value including loaded boom deflection.
3. A lifting operation is permissible only when the wind force is below grade 5 (instantaneous wind speed is 14.1 m/s, wind pressure is 125 N/m²).
4. Before beginning lifting operation, the operator should know the weight of the load to be lifted and its working range, and then select proper working conditions. Never operate the crane beyond the limit shown in the chart. Use the lower value from the chart when the boom length or working radius is between the range of values.
5. Observe the boom angle limit. Never operate the crane with the boom angle beyond the recommended limit even if a load is not being carried. Otherwise, the crane will tip.
6. The boom length given in the rated load charts should accord with the telescoping code of boom sections .